

OCT Series Ozone Cooling Tower Systems

Bodycare Ozone Equipment

OVERALL

We took our most popular ozone generators and combined with all the ancillary components that make up the perfect turn-key systems. The Ozone Cooling Tower Systems (OCT) from Ozone water Technologies are designed in properly size and as simple as possible.

The OCT series are turn-key, skid-mount, air-cooled, corona discharge (CD) type ozone/water contacting systems specifically designed for cooling tower applications. The system incorporates complete CD type ozone generator with internal PSA O₂ module(s), oil-less compressor(s), system operation & function indicating control panel, ozone injector with bypass valve, water backflow prevention device, PVC contacting vessel with degas valve, gray epoxy powder coated mild steel cabinet with stainless steel mounting base and with the main function of ORP controlled auto ozone output adjusting & ozone safe interlock. The water boost pump, ORP controller & ozone destructor are optional. The OCT series are capable of producing ozone in 10, 20, 30 & 40g/hr to treat cooling tower from 100 up to 800 Cooling Tons.

DESIGN FEATURES

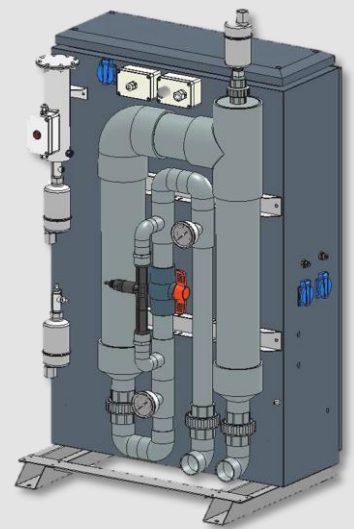
- Corona Discharge (CD)
- Integrated PSA Module(s)
- Contacting Vessel Combined
- Degas & Auto Drain Valves
- Automatic Control
- Oil-less Compressor(s) Equipped
- Ozone Boost Pump Optional
- ORP Controller Optional
- Ozone Destructor Optional

BENEFITS

- Power & water saving
- Biofilm & scale reduced
- Improve heat mass transfer
- Cleaner & lower sewer charges
- Less corrosion on all wetted parts
- Safe green technology



Front View



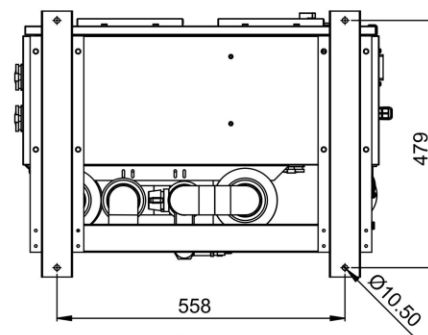
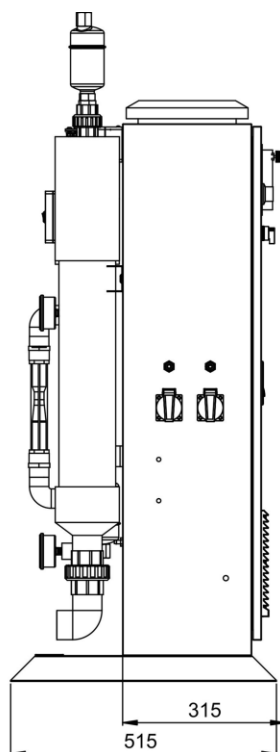
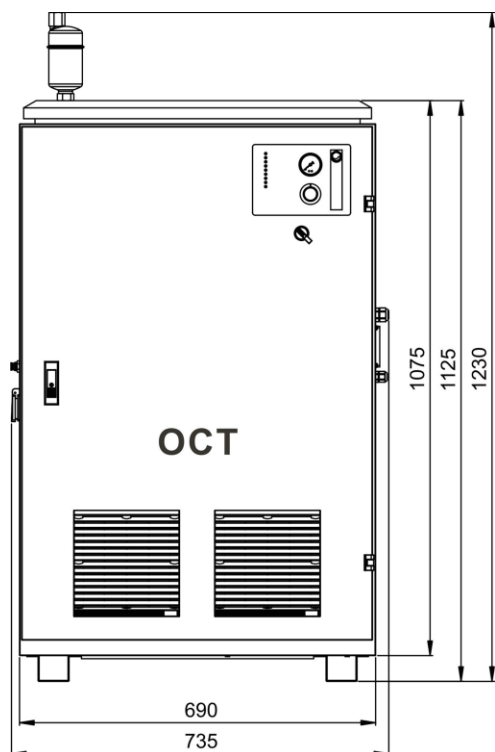
Rear View

Specifications Sheet

SPECIFICATION	OCT-10	OCT-20	OCT-30	OCT-40
Ozone Output	10g/hr	20g/hr	30g/hr	40g/hr
Matched Cooling Ton	100-200T	200-400T	300-600T	400-800T
Equipped Compressor Qty. (Flow @ Pressure)	One (60LPM @ 2bar)	One (60LPM @ 2bar)	Two (120LPM @ 2bar)	Two (120LPM @ 2bar)
Water Connection Size	Inlet: 1.5" Outlet: 1.5"	Inlet: 1.5" Outlet: 1.5"	Inlet: 1.5" Outlet: 1.5"	Inlet: 1.5" Outlet: 1.5"
Power Requirement* (Single Phase)	120/240V 60/50HZ 500W*	120/240V 60/50HZ 650W*	120/240V 60/50HZ 1050W*	120/240V 60/50HZ 1200W*
Optional Ozone Boost Pump Requirement	5M3 @ 20m Head	5M3 @ 20m Head	9M3 @ 20m Head	9M3 @ 20m Head
ORP Controller	Option	Option	Option	Option

Note: “*” Not include ozone boost pump’s power consumption.

Dimension & Weight



Note: Size in mm

OCT System Weight:

Net: 95 kg Gross: 115 kg

Oil-less Compressor Weight:

Net: 12.5 kg Gross: 15 kg
(per compressor)

Bodycare Ozone Equipment Factory

29-18 Jingshenxi 3RD Str. Daoyi Economic Development Dis.

Shenyang 110136, P.R. China

www.bcozone.com

bcozone@188.com